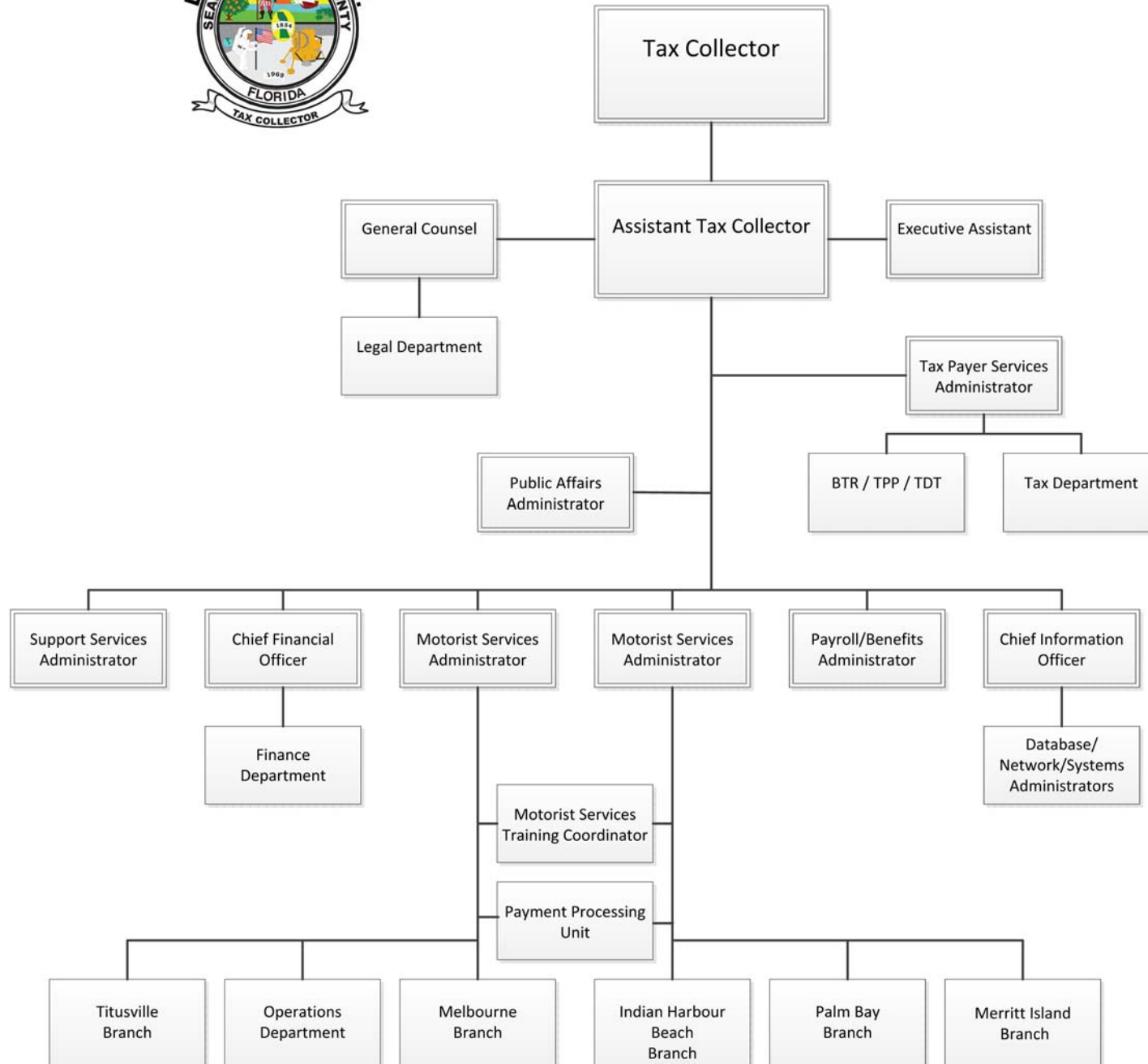
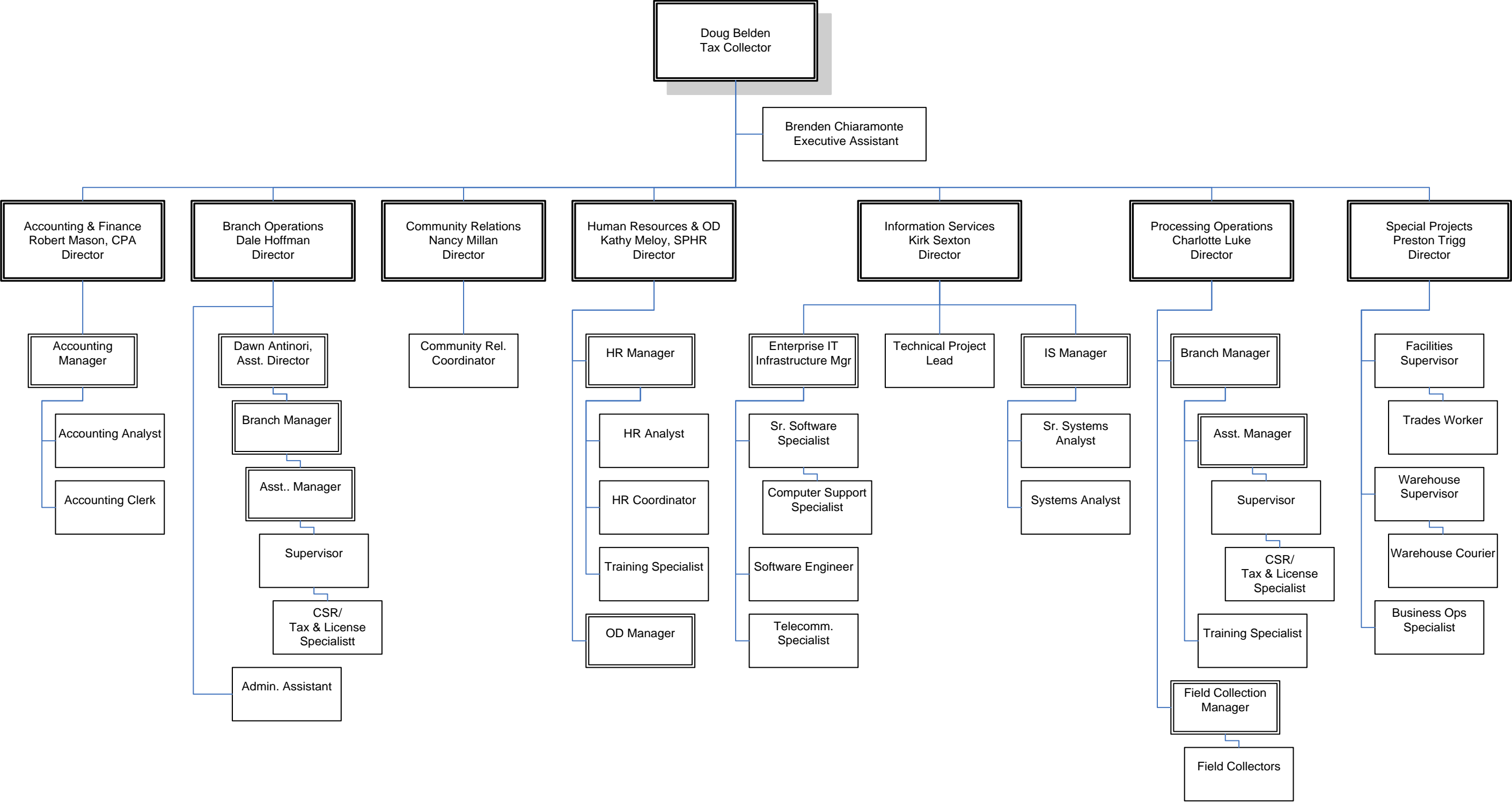




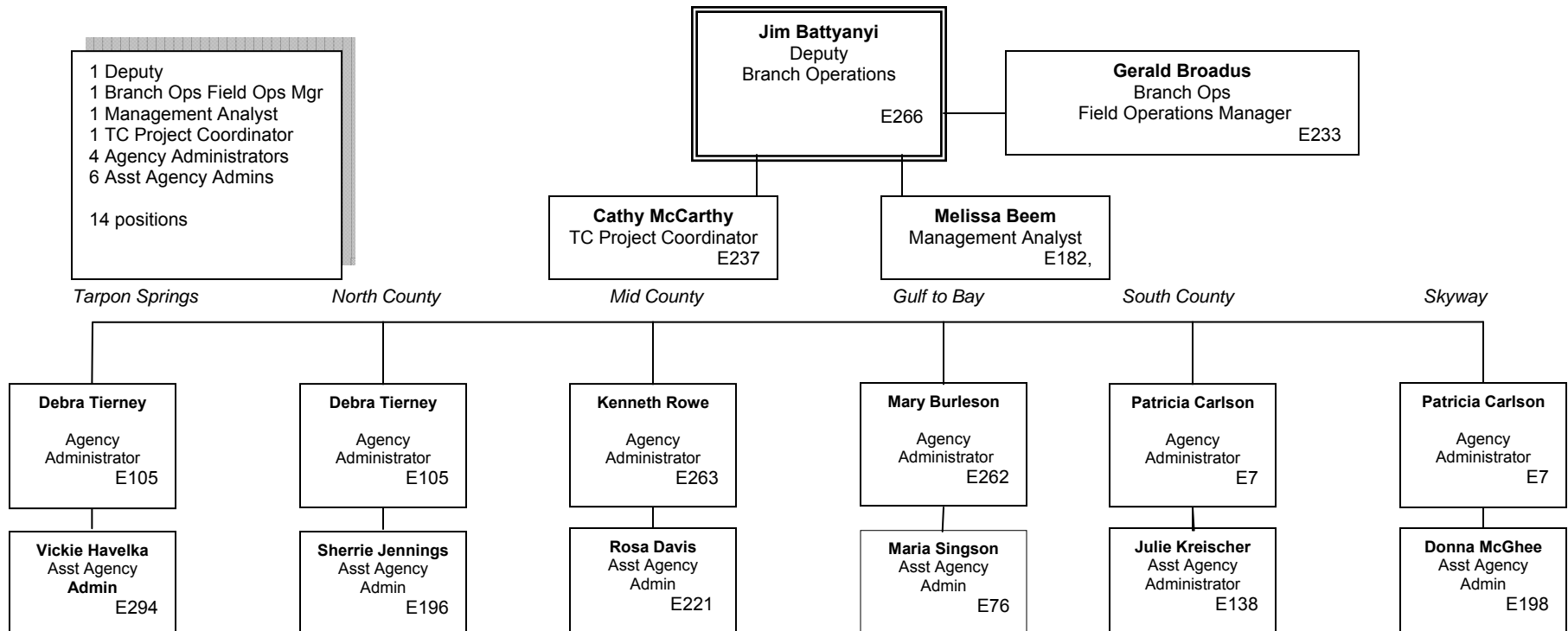
Brevard County Tax Collector



Hillsborough County Tax Collector Organizational Chart

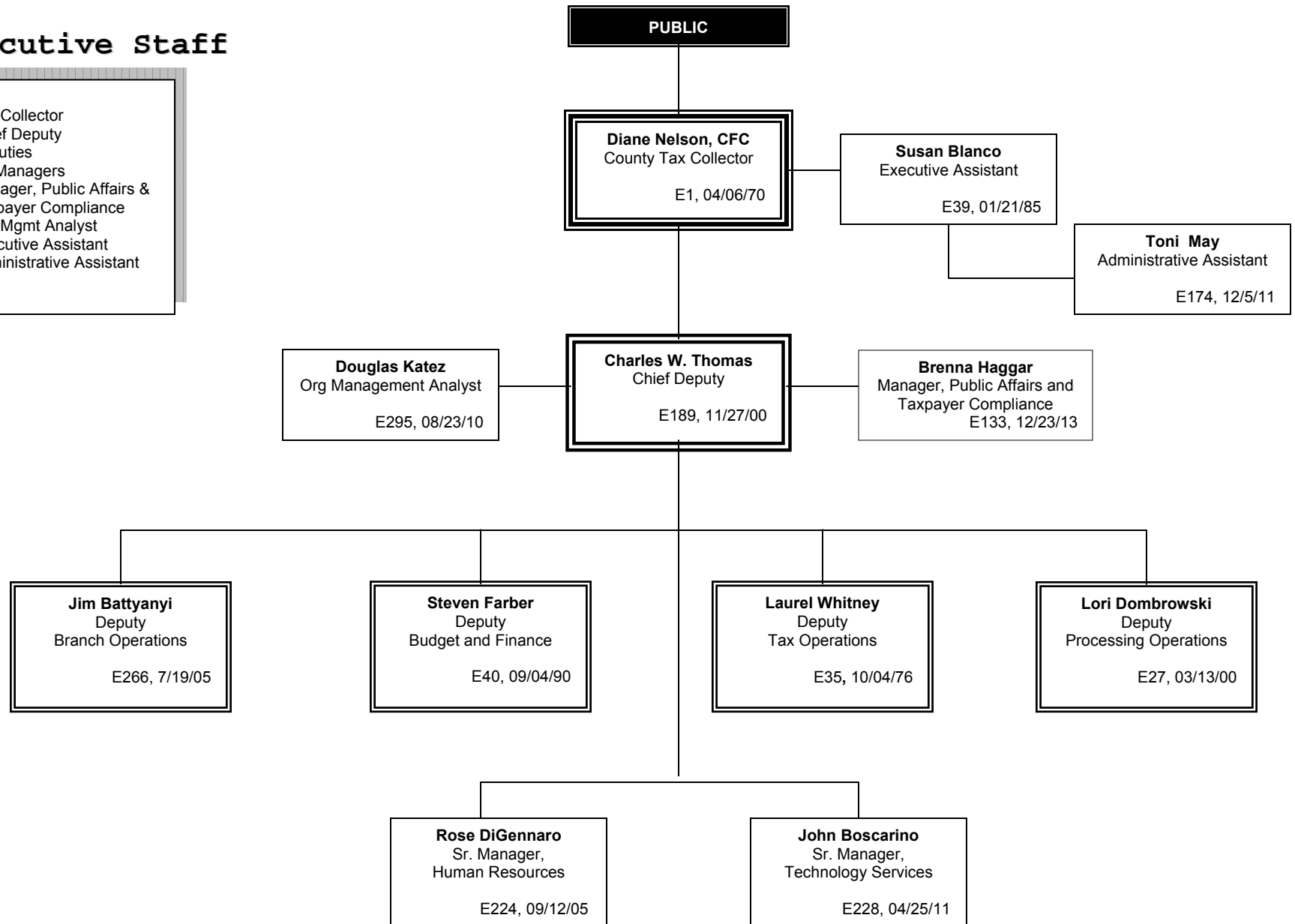


Branch Operations (Branch Ops) Executive Staff

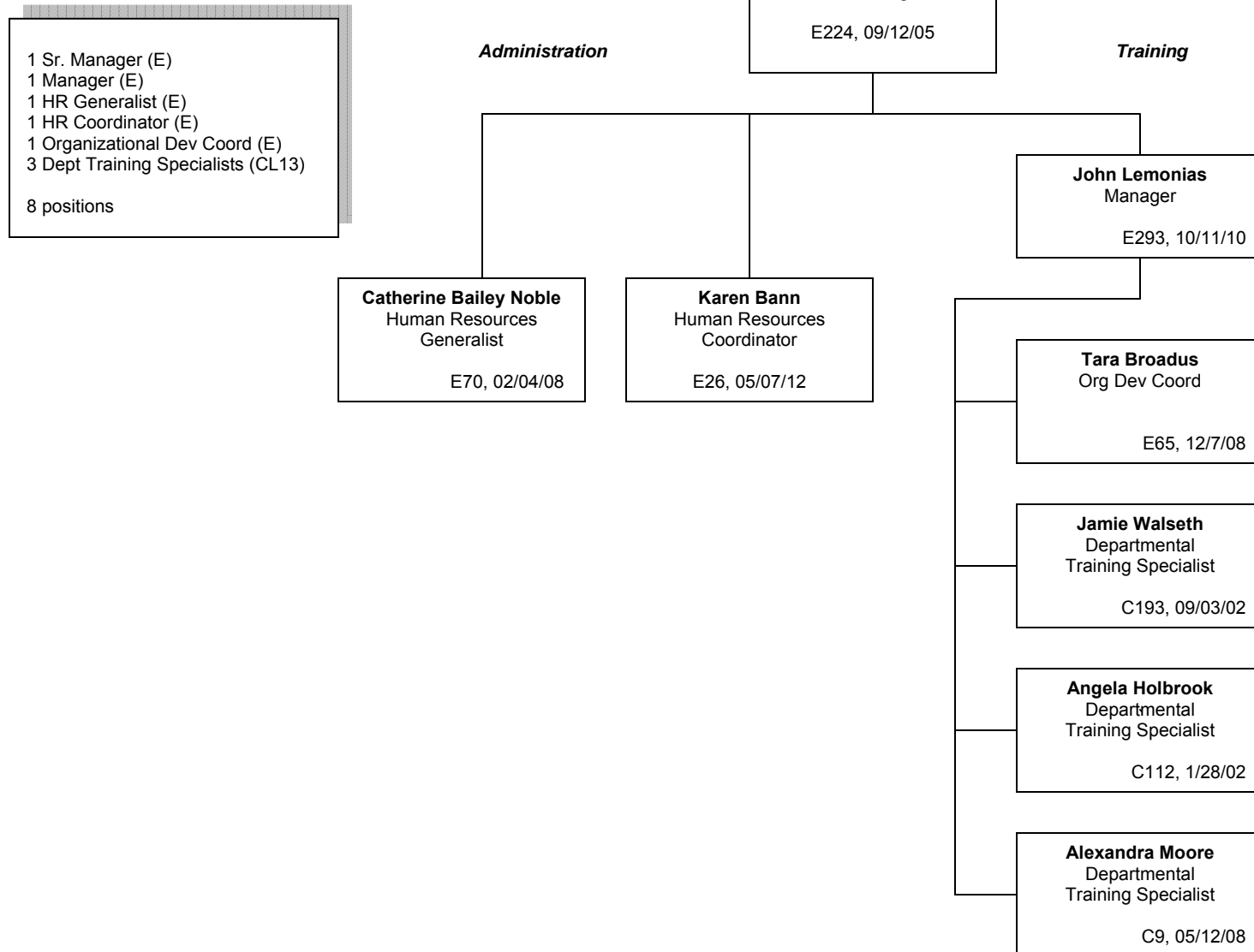


Executive Staff

1 Tax Collector
 1 Chief Deputy
 4 Deputies
 2 Sr. Managers
 1 Manager, Public Affairs &
 Taxpayer Compliance
 1 Org Mgmt Analyst
 1 Executive Assistant
 1 Administrative Assistant



Human Resources



Processing Operations (Pro-Ops)

1 Deputy (E)
1 Admin Assistant (E)
1 Agency Administrator (E)
1 Asst Agency Admin (E)
4 Supervisors (CL14)
4 Lead Tax Spec (12)
13 Sr. Tax Spec (11)
1 Property/Stores Clerk III (10)
9 Tax Spec (9)
0 Sr. Tax Asst (8)
0 Tax Asst (6)

35 Positions

Rachel Panter
Admin Assistant

Lori Dombrowski
Deputy
E27. 03/13/00

Stephanie Lillico
Agency Admin
E210, 06/01/87

Geoff Giaquinto
Asst Agency Admin
E76, 07/27/03

Tony Lebron
Prop Stores Clerk III
C162, 07/20/98

Dan Monefeldt
Supervisor
C90, 11/04/02

Joyell DeBernardi
Supervisor
C229, 1/4/99

Cissy May
Supervisor
C73, 04/24/00

Inthasone Lo
Supervisor
C75, 10/27/03

Dawn Teabout
Lead Tax Specialist
C191, 7/5/05

VACANT
Lead Tax Specialist
C80,

James Speiser
Lead Tax Specialist
C128, 07/21/97

Christine Frangipane
Lead Tax Specialist
C211, 06/15/98

Velma Williams
Sr. Tax Specialist
C144, 11/24/97

Kelly King
Sr. Tax Specialist
C42, 05/24/10

Doris Chartrand
Sr. Tax Specialist
C38, 04/27/87

Caroline Franklin
Sr. Tax Specialist
C290, 06/26/00

Tammy Morano
Sr. Tax Specialist
C136, 11/15/04

Estella Balkissoon
Sr. Tax Specialist
C230, 04/30/07

Maurisa Bussy
Sr. Tax Specialist
C147, 11/04/02

Evelyn Rivera
Sr. Tax Specialist
C152, 08/20/01

Tiffany McCall
Sr. Tax Specialist
C64, 07/12/10

Leona Daniels
Tax Specialist
C272, 12/31/02

Victoria Thiel
Sr. Tax Specialist
C28, 09/12/05

Nettie Woods
Tax Specialist
C95, 09/02/97

Tieisha McCluster
Sr. Tax Specialist
C57, 06/13/11

Amy McCormick
Tax Specialist
C126, 02/26/07

Brian Peckham
Sr. Tax Specialist
C135, 06/04/07

Mark Deveau
Tax Specialist
C168, 01/24/00

Thomas Reed
Tax Specialist
C215, 04/23/07

Jean Koss
Tax Specialist
C82, 01/09/06

Shelly Demillion
Tax Specialist
C60, 02/13/95

Cindy Fisher
Tax Specialist
C11, 11/09/09

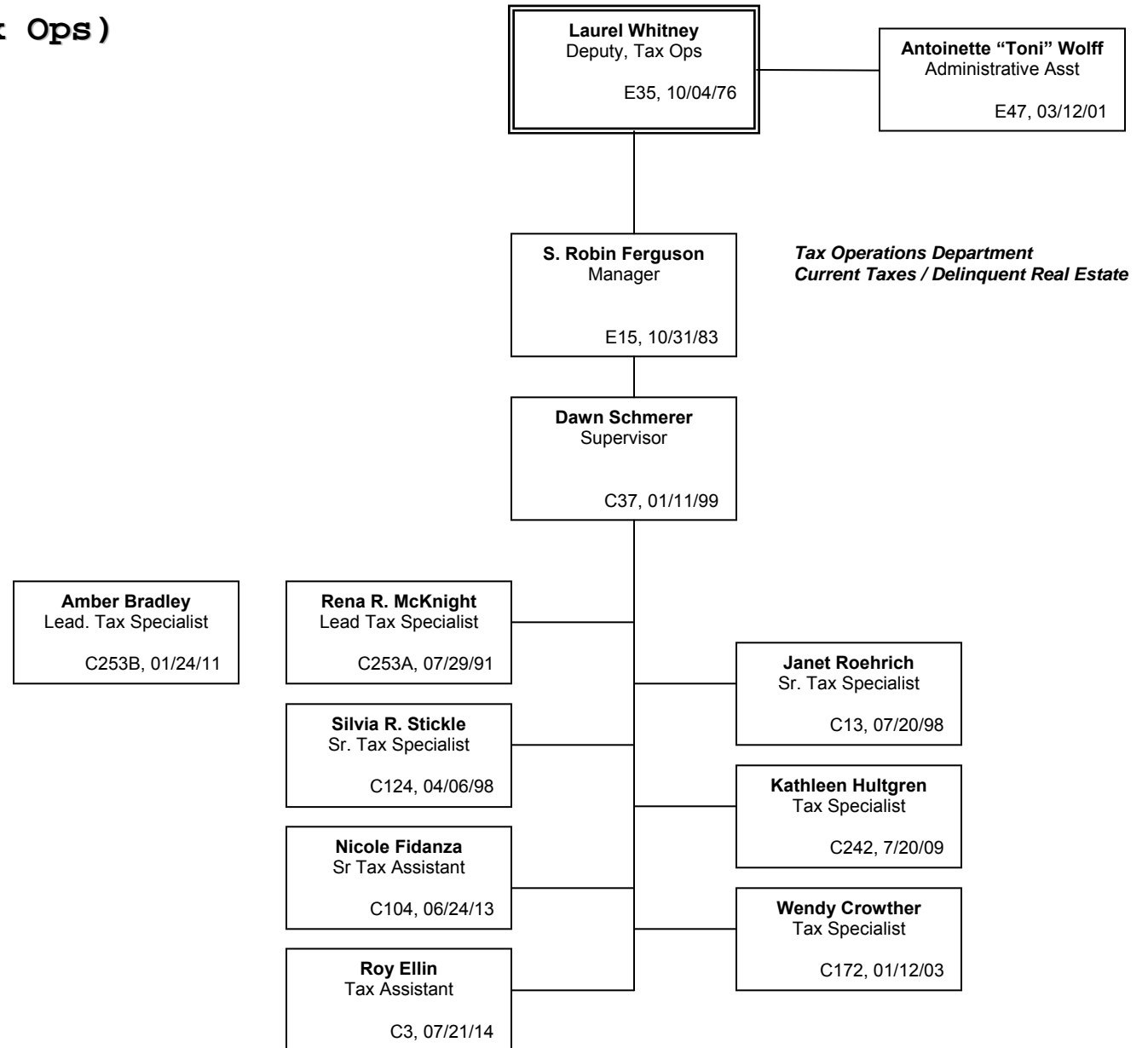
Jennifer Gibbs
Tax Specialist
C169, 02/22/10

VACANT
Sr. Tax Specialist
C12,

Tax Operations (Tax Ops)

1 Deputy (E)
1 Manager (E)
1 Admin Asst (E)
1 Supervisor (CL14)
2 Lead Tax Specialist (12)
2 Sr. Tax Specialists (11)
2 Tax Specialists (9)
1 Sr. Tax Assistant (8)
1 Tax Assistant (6)

12 positions



Technology Services

1 Sr. Manager (E)
1 Manager (E)
8 Mgmt Info Coordinator (E)

10 positions

John Boscarino
Sr. Manager

E228, 04/25/11

Branch Support Services

Business Support Services

Lisa K. Gentry
Management Information
Coordinator

E197, 10/15/01

Robert A. Price
Management Information
Coordinator

E2, 06/27/04

Angela Labiak
Management Information
Coordinator

E20, 10/17/05

Jeff Schaefer
Management Information
Coordinator

E201, 08/28/06

Nick Fatolitis
Manager

E227, 04/09/01

Mona Kaushal
Management Information
Coordinator

E30, 1/22/07

Michael Schwaid
Management Information
Coordinator

E34, 03/30/09

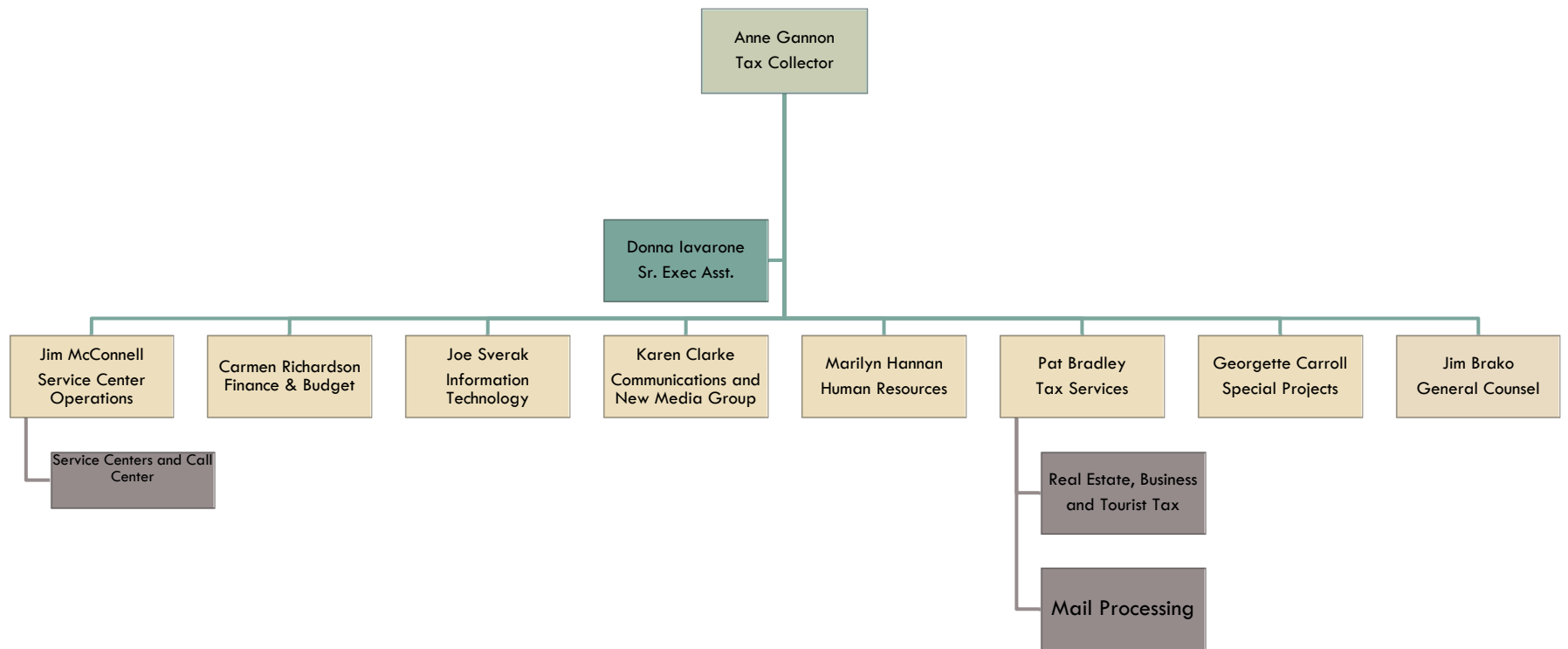
Bill Barrett
Management Information
Coordinator

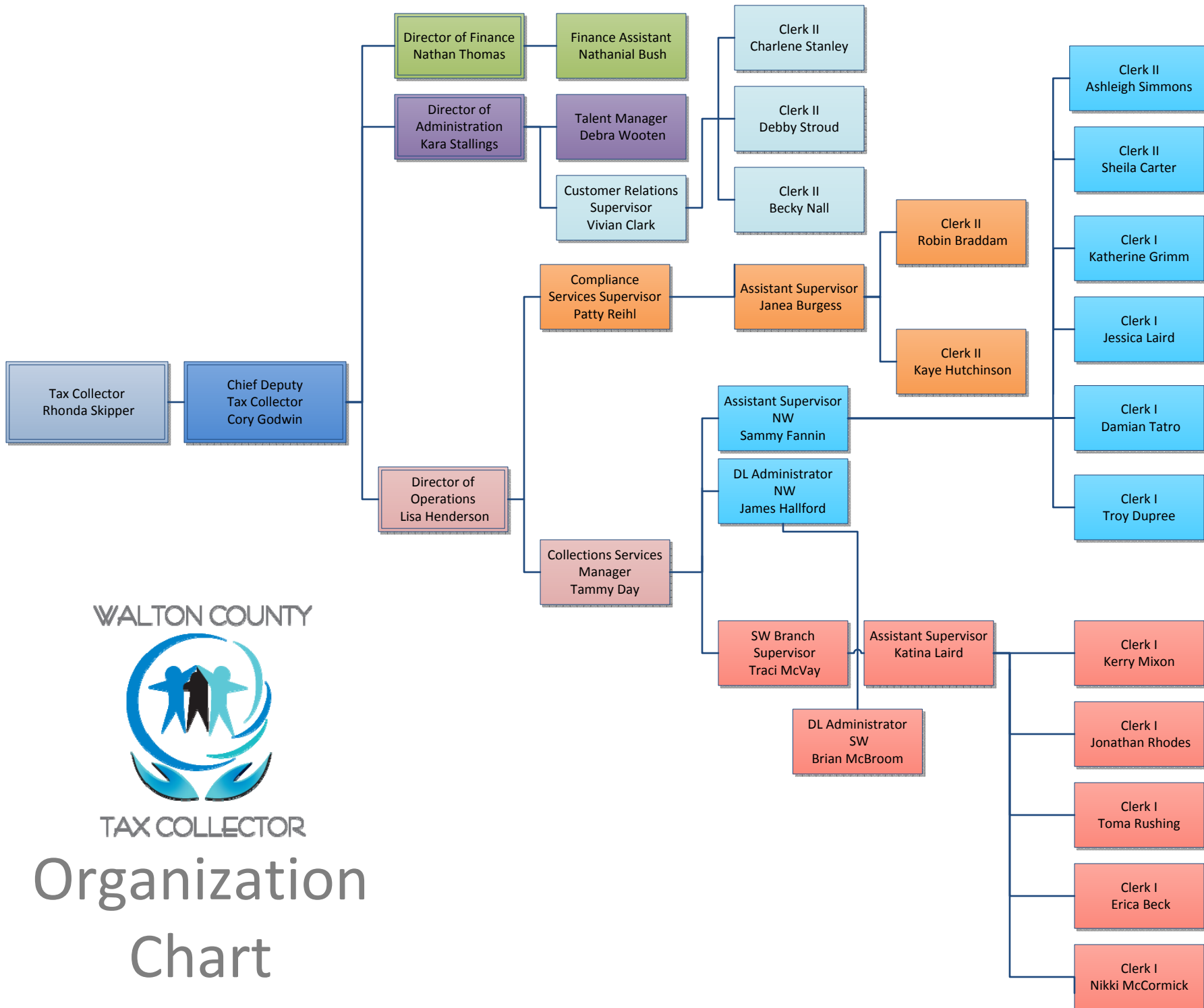
E32, 05/16/11

Marcia McCraney
Management Information
Coordinator

E83, 07/22/02

PALM BEACH COUNTY TAX COLLECTOR'S OFFICE OVERVIEW





WALTON COUNTY



TAX COLLECTOR

Organization Chart